

Move/2500

Guarantee terminal's availability
whatever happens

- Assure terminal availability rate if power and network fail
- Make NFC payment a seamless consumer experience
- Robust and functional to meet merchants' daily needs



The Move/2500 offers a seamless payment experience. A pocket-sized portable terminal, it complies with future security standards.

Highest security

The Move/2500 is PCI-PTS 5.x certified. Its Telium TETRA OS uses the latest cryptographic schemes with future-proof key length.

All payment options

The Move/2500 enables NFC couponing and wallet use cases, in addition to EMV Chip & PIN, swipe and contactless.

Designed for mobility

Designed for indoor and outdoor use, the Move/2500 Portable is a pocket-size and offers extended battery. It is the perfect business companion for merchants.

Guaranteed terminal availability

In a single terminal, the Move/2500 Hybrid comes with wired communication capabilities (Ethernet, PSTN) or wireless (4G,3G, GPRS, Dual SIM) or WiFi. Then it guarantees terminal payment acceptance availability in case of network failures.

Seamless NFC payment

The Move/2500 boosts contactless payment by offering customers a seamless experience through a dedicated card-reader zone and faster transaction flow.

Secure Telium TETRA OS

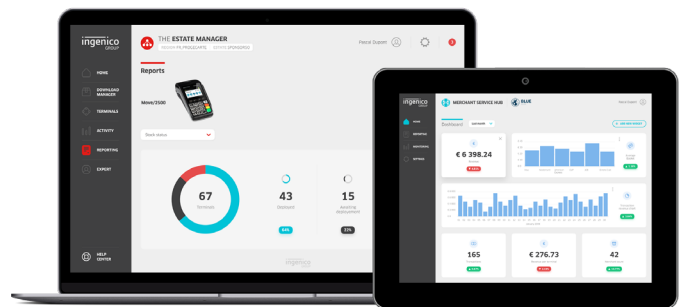
Backed by 40 years of experience and with its user-friendly interface, the Telium TETRA operating system includes the best security mechanisms embedded to protect transaction privacy and leverages Ingenico's unique portfolio of payment applications.

Compatible with Ingenico's suite of services

Keeping the solutions connected, the Move/2500 works in unison with Ingenico's supporting service platforms, meaning merchants will have access to business services such as back office reporting and e-receipt management. Software updates and day-to-day support deliver a hassle-free experience.



The Move/2500 is supported by our Cloud Services



			MOVE/ 2500 HYBRID	MOVE/ 2500 PORT.
Processor	<ul style="list-style-type: none"> Application & Crypto processor 	<ul style="list-style-type: none"> Cortex A5 	●	●
Memory		<ul style="list-style-type: none"> 256 MB Flash, 128 MB RAM 512 MB Flash, 128 MB RAM 	● Option	● Option
OS		<ul style="list-style-type: none"> Telium TETRA 	●	●
SIM		<ul style="list-style-type: none"> 2 SIM 	● Option	● Option
SAM		<ul style="list-style-type: none"> 2 SAM 3rd SAM 	● Option	● Option
Card readers	<ul style="list-style-type: none"> Magstripe Smart card NFC/Contactless 	<ul style="list-style-type: none"> ISO 1/2/3, 500K lifespan EMV Level 1, 500K lifespan EMV Level 1 compliant 	● ● ●	● ● ●
Display	<ul style="list-style-type: none"> Colour 	<ul style="list-style-type: none"> 2.4" backlit, QVGA (320x240 pixels) 	●	●
Keypad		<ul style="list-style-type: none"> 16 keys, raised marking, backlit 4 Functional Keys without backlit 	● ●	● ●
Audio	<ul style="list-style-type: none"> Buzzer 		●	●

*Depending countries

			MOVE/ 2500 HYBRID	MOVE/ 2500 PORT.
Thermal Printer	<ul style="list-style-type: none"> Speed in lines/s Paper roll cage 	<ul style="list-style-type: none"> up to 24 lines/s 58 mm width x Ø 40 mm 	● ●	● ●
Terminal connectivity	<ul style="list-style-type: none"> WAN LAN Wired 	<ul style="list-style-type: none"> 4G* (fallback GPRS only) or/ and 3G and/or GPRS WiFi Dial-up Modem RJ45 Ethernet 10/100 base T RJ45 	● ● ●	● Option N/A
Terminal connections	<ul style="list-style-type: none"> USB Serial Power Supply 	<ul style="list-style-type: none"> Micro USB Host & Slave RS 232 RJ11 Dedicated power jack 	● ● ●	● N/A ●
Battery	<ul style="list-style-type: none"> Li-ion 	<ul style="list-style-type: none"> 2200mAh 	●	●
Terminal size	<ul style="list-style-type: none"> Portable Hybrid 	<ul style="list-style-type: none"> 168x81x58 mm (6.6x3.2x2.3") 168x81x69 mm (6.6x3.2x2.7") 	N/A ●	● N/A
Weight	<ul style="list-style-type: none"> Terminal + Battery 	<ul style="list-style-type: none"> 320 g (11 oz) 	●	●
Environment	<ul style="list-style-type: none"> Operating Temperature Storage Temperature Operating Humidity 	<ul style="list-style-type: none"> -10°C to +40°C (14°F to 104°F) -20°C to +55°C (-4°F to 131°F) 85% non-condensing at +40°C (104°F) 	● ● ●	● ● ●
Security		<ul style="list-style-type: none"> PCI PTS 5.x & 4.x online & offline certified 	●	●



www.ingenico.com

ingenico
a Worldline brand